

**nurus**



# Greta Long

Design by Nurus D Lab

---

## Greta Long

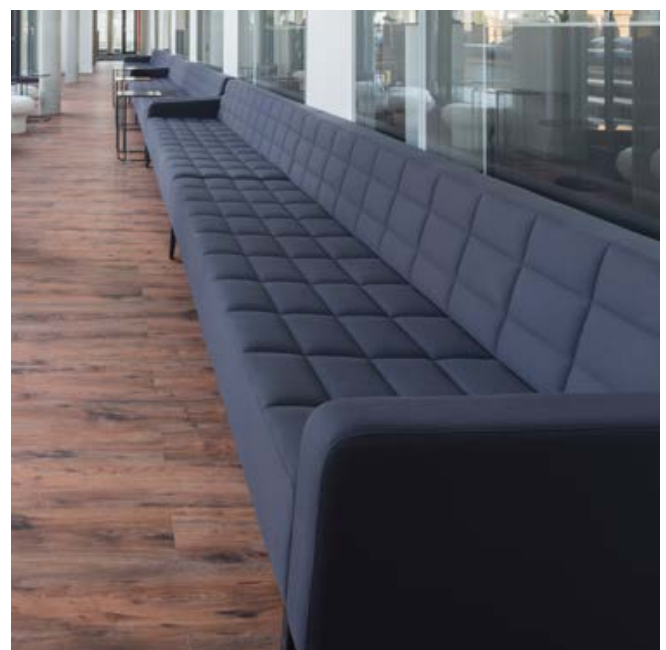
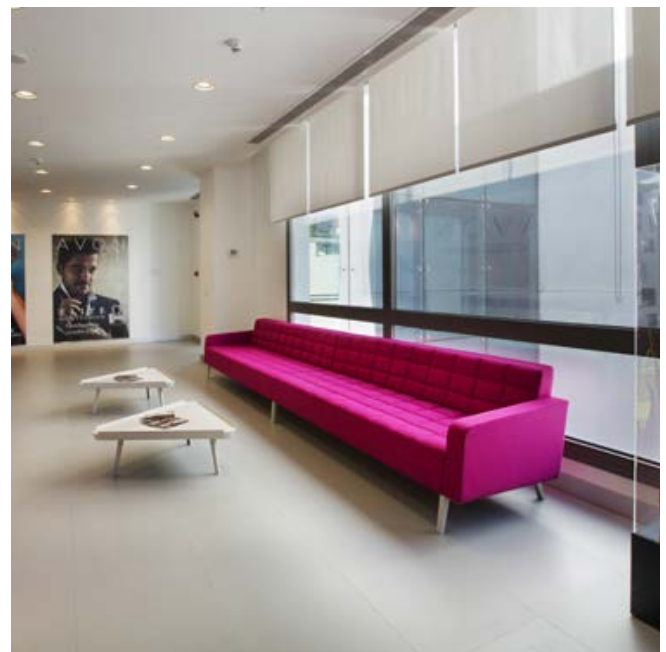
Greta long sofa was designed to extend retro lines of Greta collection into large spaces with many users. Facilitating effective use of large spaces such as hotel lobbies, workspace entrance halls, and waiting rooms, Greta long sofa not only catches the eye with large proportions, but also creates a striking look.

Seamlessly blending with your interior design with a wide variety of colour and material choices, Greta also offers sturdy structure, lightweight, and soft quilted fabric, creating comfortable, cosy and fun spaces.

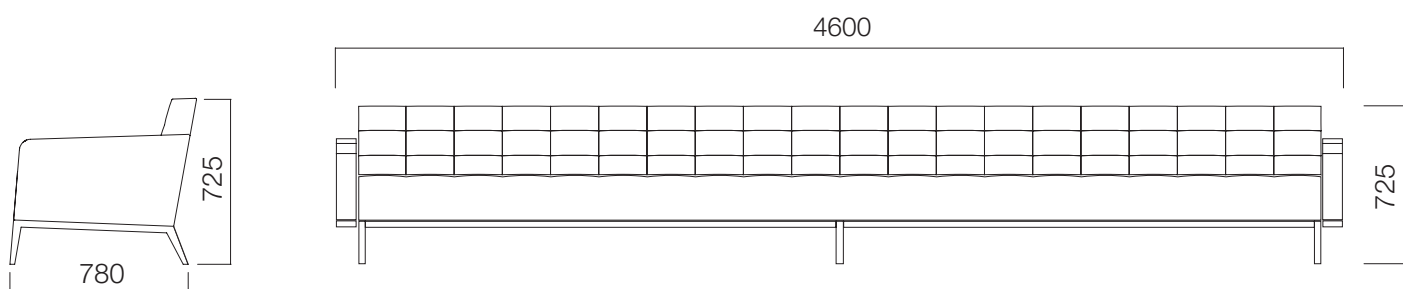
## Design by Nurus D Lab

Always up-to-date with science and technology, Nurus D Lab designs products that are ahead of their time. Through human-centred observation, prototyping and in respect to trending needs and dreams, the team works diligently. Coming up with meaningful and reflective design solutions only marks the start of the process: From strategy to launch and support, D Lab manages it all. Each detail is attended and tested through at the advanced level.

**Striking look for large spaces.**



DIMENSIONS (mm)



Dimensions defined in millimetres.

**Materials**

Legs are powder painted. Upholstery features various material choices.\*

\*Please refer to technical document for more information.