

nurus



Varto

Design by **Nurus D Lab**

Varto

Varto creates flexible and productive solutions for changing working habits and open offices. While helping split workspaces and social areas into sections, Varto also facilitates establishing information desks and reception areas.

Varto features 4 different height (107, 137, 167 and 197 cm) and 4 different width (60, 80, 100 and 120 cm) choices; a door can be mounted onto 197 cm version.

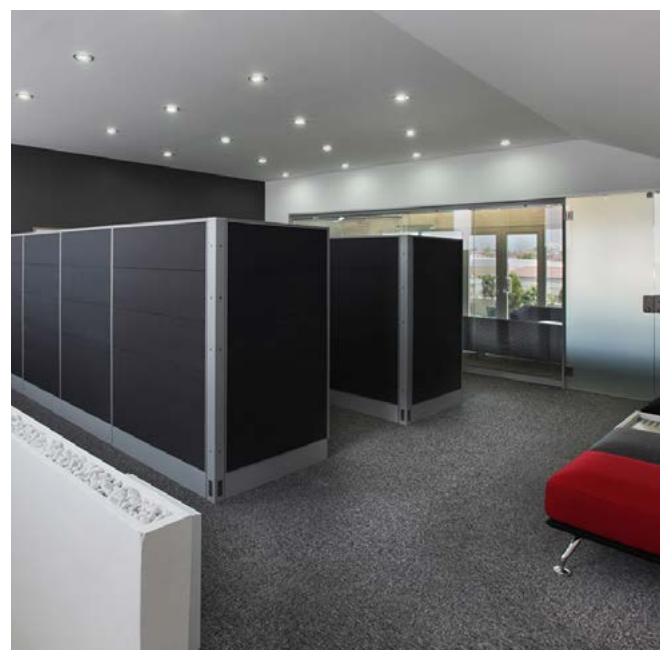
Varto panels offer an optional metal and melamine cabinets and metal shelves that can be mounted onto the panels to meet your needs, while delivering electrical cables from ground to desktop with electrification strips, preventing visual pollution caused by cables and facilitating access to electrical connections by employees.

In open offices Varto helps create workspaces, waiting rooms, lounges, and meeting rooms, as well as storage areas, information desks, and reception areas. Facilitating separate departments from one another and dividing space into sections, Varto also helps create customizable spaces increases interaction between employees.

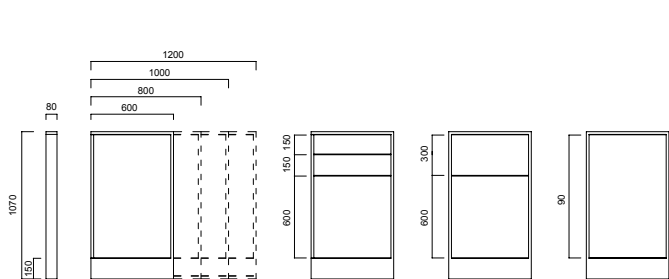
You can prefer Varto panel surfaces in fabric, melamine or glass to suit your purpose of use and match interior design features.

Design by Nurus D Lab

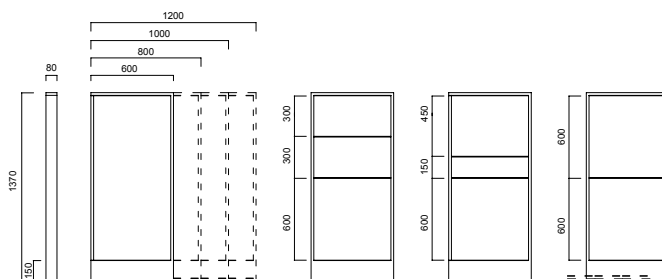
Always up-to-date with science and technology, Nurus D-Lab designs products that are ahead of their time. Through human-centered observation, prototyping and in respect to trending needs and dreams, the team works diligently. Coming up with meaningful and reflective design solutions only marks the start of the process: From strategy to launch and support, D-Lab manages it all. Each detail is attended and tested through at the advanced level.



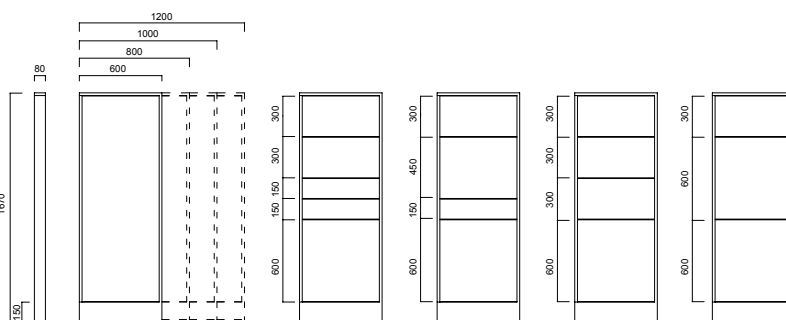
DIMENSIONS (mm)



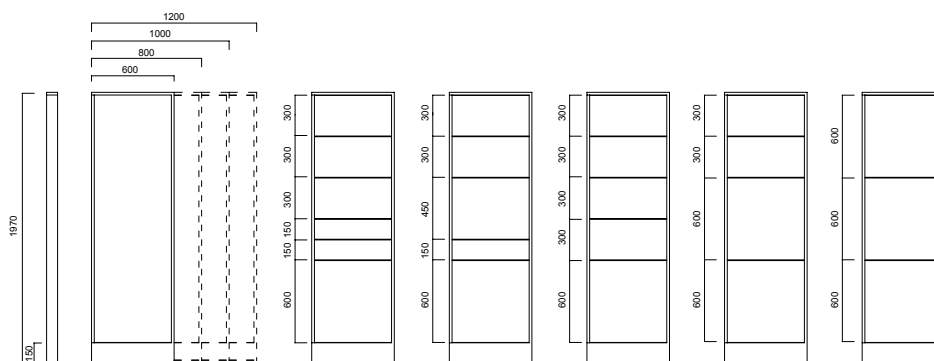
Varto Panel H107



Varto Panel H137



Varto Panel H167



Varto Panel H197

*The panel surface of H:90 cm is laminated glass and it is only used on H:107 cm panels.

Dimensions defined in millimetres.

Materials

Panel frame is powder painted metal. Panel surface can be fabric, melamine, or glass. Cabinet main body is melamine or metal. Cabinet doors are melamine.*

* Please refer to technical document for more information.