

nurus

Uneo

User and
Assembly Guide



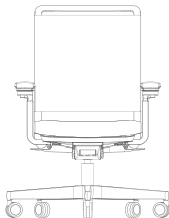
Develop a healthier sitting habit

Besides its sympathetic view and lightness, Uneo will suit to every office with its rich color and cloth range. Uneo, of which its structure is manufactured in a single part, is modern and elegant with its plain geometry.

Uneo has a Dyna-Support plus mechanism that reacts and thus rapidly complies with against your weight and provides opportunity for the user to make custom adjustment. While the integrated control mechanism provides convenience, it supports a healthy sitting position throughout long working periods with its customization feature.

Uneo, having internal and standard lumbar support, is an ideal selection with its ergonomic features for various areas from the working areas to meeting rooms and houses and offices.

Uneo



Uneo Dyna Support Plus®



We spend approximately 15 years of our lives by sitting. Thus, a sitting position that protects our backbone and neck is very important.

Neck

It should be straight or a little forward curved.

Back

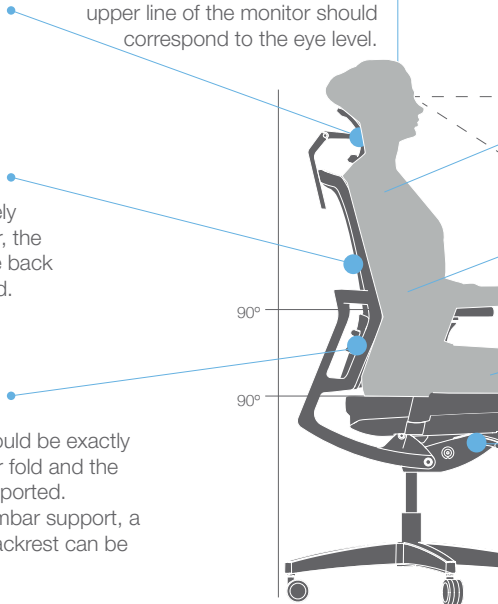
By leaning completely against the armchair, the whole surface of the back should be supported.

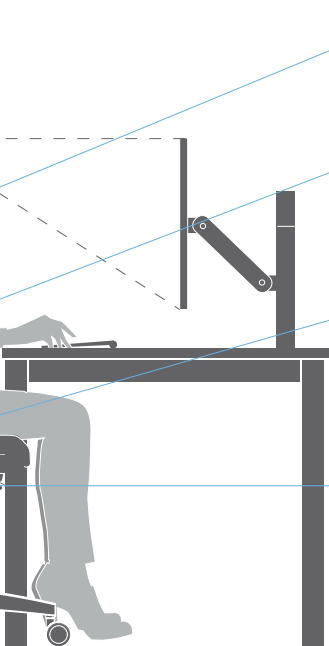
Waits

Lumbar support should be exactly placed in the lumbar fold and the waist should be supported. Alternative to the lumbar support, a height-adjustable backrest can be used.

Point of view

Monitor should be 50-75 cm away from the eyes and the upper line of the monitor should correspond to the eye level.





Shoulder

Shoulders should be left free and the arms should be supported from the elbows.

Arm

Arms should be parallel to the ground and they should be at the same level with the working surface.

Upper leg (femur)

Armchair height should be adjusted provided that the upper leg is parallel to the ground.

Armchair resistance

Resistance of the backrest that is applied on the user should be adjusted manually or automatically.

A well-designed and ergonomic armchair supporting our body protects our health and our productivity.

Back upholstery

High-technology, smart net cloth both provides the back to take the air and also provides a more comfortable and flexible sitting position by decreasing sweating.

Back slope

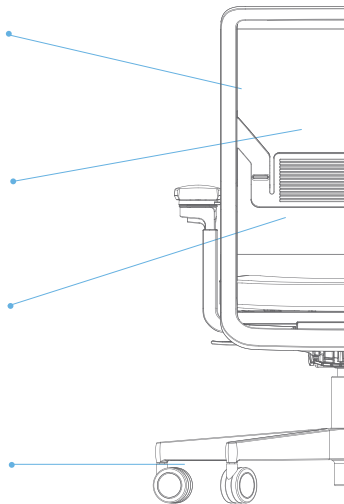
Backrest can be locked in upright position and the inclination movement of the backrest between 0 and 20.5 degrees can be limited in 3 different grades in addition to the upright position.

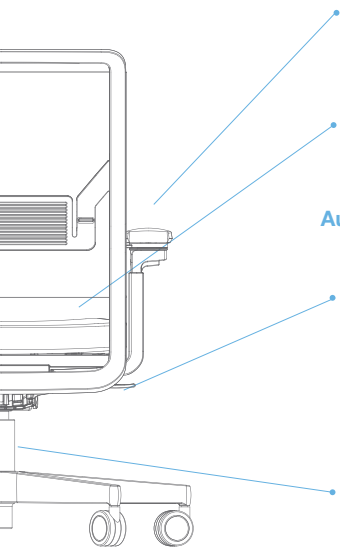
Lumbar support

Lumbar support that can be adjusted for different body sizes, sizes and supports the waist fold.

Wide foot diameter

Even the center of gravity rapidly changes, it protects its stability and prevents injuries that may occur due to falling down and thus provides a safe sitting position.





Arm and Armrest motions

4D armrests together with expandable armrest interval adjustments for different body sizes are provided as a standard in Uneo.

Sitting depth

For different leg lengths, it provides an ergonomic sitting position by moving 60 mm back and forth..

Automatic back hardness adjustment

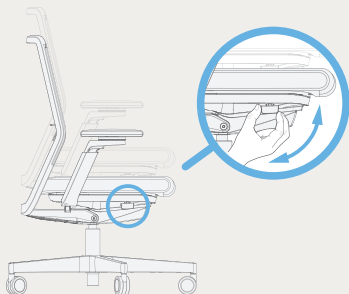
Uneo combined with the Dyna-Support Plus® mechanism support from 45 to 135 kilograms of body weight and offers adjustable back support resistance.

Leg and the wheels

With its polypropylene legs, the wheels submitted for soft and hard grounds provide a silent and comfortable sitting position

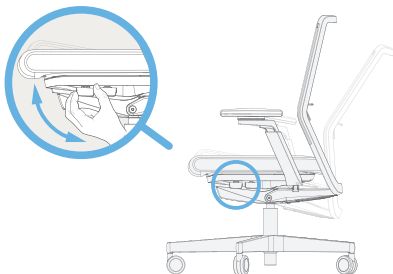
Sitting height adjustment

You can adjust the height of the armchair according to your height by pulling the arm on the right side of the sitting front outwards. In order to raise the armchair, you need to take off your weight from the armchair while performing this motion.



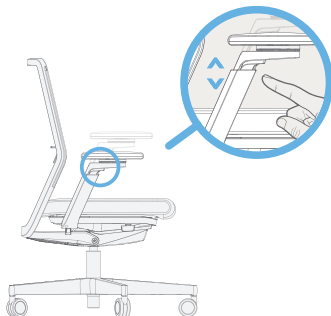
Back inclination adjustment

On the left side of the sitting front; you can lock the back inclination in upright position by pulling the arm on the front side outwards and you can release the back motion by pushing the arm. By continuing to push the same arm, you can limit the back inclination at 3 different levels.



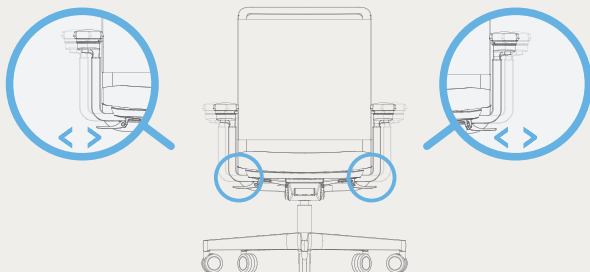
Armrest height adjustment

You can adjust the armrest height according to your body and to the height of your table by pressing on the button under the armrest.



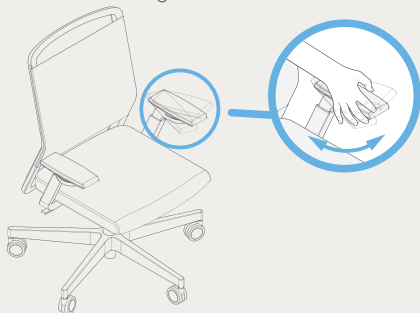
Armrest width adjustment

By opening the armrest locks towards below, you can release the armrests and you can adjust the sitting width by pulling the armrests outwards. After you adjust the armrests at your own width demands, you can lock them by closing the locks.



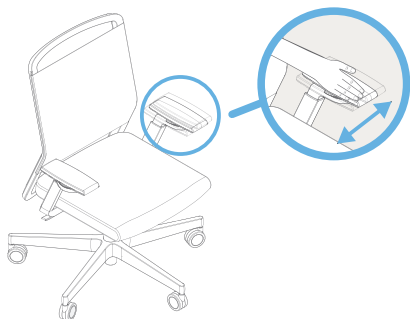
Arm support angle adjustment

By pressing the buttons placed on the inner sides of the arm supports, you can adjust the angle of the arm supports up to 180 degrees and you can provide to have your arms and elbows supported even at different angles.



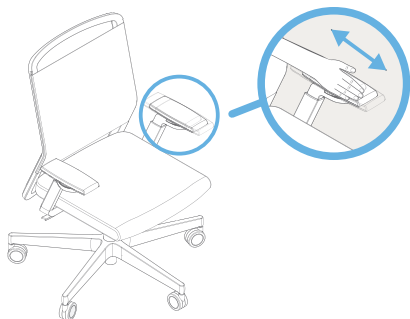
Arm support width adjustment

You can adjust the arm support by moving the arm supports inwards and outwards manually.



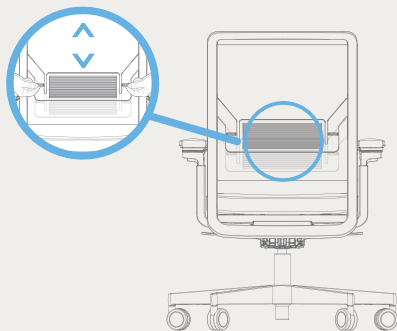
Arm support depth adjustment

You can have your elbow supported at every position by moving the arm support inwards and outwards manually.



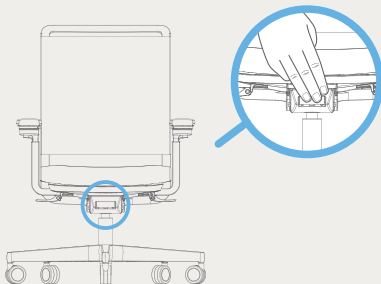
Waist support adjustment

By moving the waist support upwards and downwards manually from both sides, you can adjust the most suitable location for your waist.



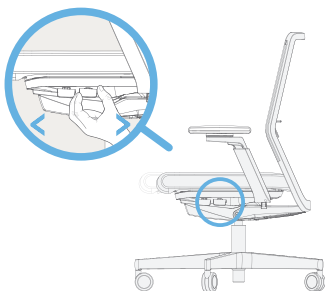
Back hardness fine adjustment

After pulling the arm on the front side of the armchair mechanism to the front, you increase or decrease the automatically adjusted back hardness.



Sitting depth adjustment

By pulling the arm on the left back of the sitting front, you can adjust the sitting front according to your leg length.



Armrest options

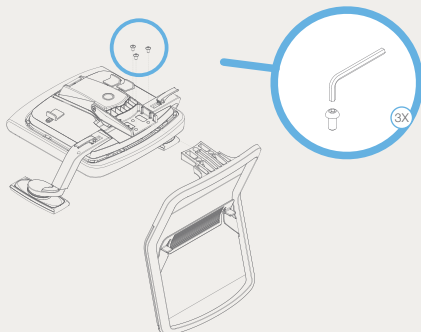
In Uneo working armchairs, in addition to the height adjustment, 4D armrests of which the arm support can rotate 180 degrees and of which the depth and width of the arm support can be adjusted are present as a standard.



4D Kolçak

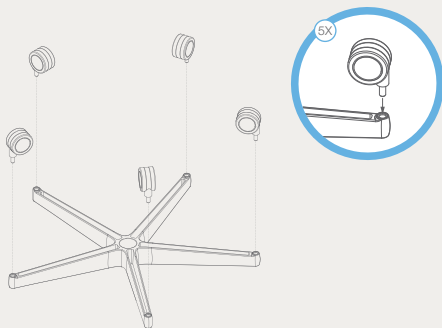
Assembly scheme - 1

As shown in the figure, align the holes on the mechanism and on the back side and place the screws and assemble the back side of the armchair and its mechanism to each other.



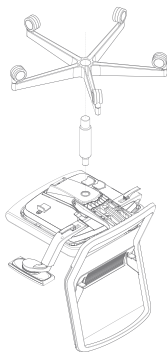
Assembly scheme - 2

Place the wheels on the slots on the 5-arm star leg and press and ensure that they fit on the slots exactly.



Assembly scheme - 3

As shown, tightly fit the damper on the slot on the machine and then fit the star leg with assembled wheels on the damper. Your armchair is ready to sit.



Thank you for choosing Uneo
for your health.
Enjoy your new armchair.

nurus.com

shop.nurus.com.tr